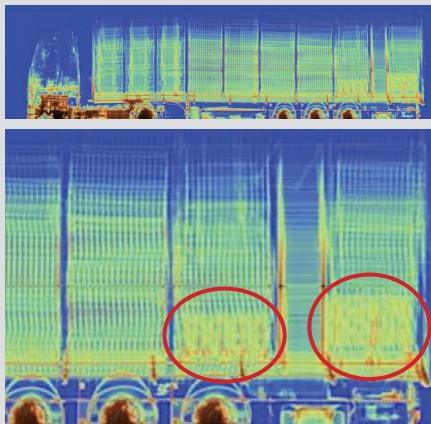


# RAPISCAN EAGLE M60

## HIGH-ENERGY MOBILE INSPECTION SYSTEM

### KEY FEATURES AND BENEFITS

- High-quality imaging with material discrimination
- Multiple scan modes for maximum flexibility
- Scans 5 m tall objects



TOP: Full scan transmission X-ray  
BOTTOM: Enlarged section

The Rapiscan Eagle<sup>®</sup> M60 is a high-energy mobile inspection system designed with multiple operational modes for maximum flexibility as inspection needs change. The system scans stationary cargo in drive-by mode and can also scan vehicles driven through the X-ray tunnel, either with automatic cab exclusion or using CabScan<sup>®</sup> mode to image the entire vehicle. In driverless mode, operators can scan vehicles without requiring a driver, reducing operating costs.

The system's high-performance transmission imaging offers penetration of up to 330 mm steel with 3- or 4-color material discrimination for improved detection of threats and contraband. The Eagle M60 scans cargo and vehicles up to 5 meters in height and 2.8 meters in width without corner cutoff. The system is easily driven over public roads and quickly deployed after arriving on site.

# SPECIFICATIONS

## EAGLE M60

### TYPICAL DRIVE-BY PERFORMANCE

	M60-S	M60-T	M60-R
<b>Steel Penetration</b>	310 mm	330 mm	320 mm
<b>Wire Resolution</b>	1.2 mm	1.2 mm	0.8 mm
<b>Spatial Resolution</b>	4 mm (H) 4 mm (V)	4 mm (H) 4 mm (V)	3 mm (H) 3 mm (V)

### OPERATING FEATURES

- **X-ray Source:** 6 MeV
- **Crew:** Minimum of two operators (driver and analyst); ground guide and additional analysts optional
- **Scan Modes:** Drive-by with optional portal and CabScan modes
- **Scan Direction:** Bi-directional in drive-by mode
- **Scanning Speed:** 0.13, 0.26, 0.4 m/s in drive-by; 3–8 km/hr in portal mode
- **System Throughput:** Up to 80 trucks per hour in portal mode
- **Set-up Time:** 20 min in standard operating environment
- **Shore Power Requirements (option):**
  - **50 Hz:** 400 V, 63 A, 44 kVA
  - **60 Hz:** 220 V, 125 A, 48 kVA

### SYSTEM DIMENSIONS AND SPECIFICATIONS

#### Chassis

- **Mercedes-Benz® Truck:** As determined by country homologation

#### Stowed Dimensions

- **Length:** 11.2 m (36 ft 9 in)
- **Width:** 2.5 m (8 ft 2 in)
- **Height:** 4.0 m (13 ft 1 in)

#### Deployed Dimensions

- **Length:** 11.2 m (36 ft 9 in)
- **Width:** 7.9 m (25 ft 11 in)
- **Height:** 5.9 m (19 ft 4 in)

#### Maximum Scanned Object Dimensions

- **Width:** 2.8 m (9 ft 2 in)
- **Height:** 5.0 m (16 ft 5 in)
- **Minimum Scan Height:** 0.4 m (1 ft 4 in) from ground

### ENVIRONMENT

- **Operating Temperature:** -10° C to 40° C (14° F to 104° F)
- **Maximum Wind Speed:** 40 km/hr

### HEALTH AND SAFETY

- **Open Radiation Exclusion Zone (in drive-by mode; 25 trucks per hour):** 50 m x 40 m (164 ft x 131 ft 3 in)
- **Radiation Dose at Exclusion Zone Boundary:** 0.5 µSv in any one hour
- **Radiation Dose to Driver (in portal mode):** Less than 0.25 µSv per scan
- **Radiation Dose to Crew:** 0.5 µSv in any one hour
- **Radiation Dose to Cargo:** Less than 20 µSv per scan

The performance characteristics and photos in this document are indicative and for information only and specifications may vary depending on scan speeds, options and other factors; the specific characteristics of individual systems may differ based upon customer requirements, operation, and supplied options. In addition, due to continual development of Rapiscan Systems and AS&E products, we reserve the right to amend specifications without notice. Please note that due to U.S. laws and regulations, not all products are available for sale in all countries without restriction. Please contact your Rapiscan | AS&E Cargo Scanning & Solutions sales representative for more information or to discuss additional requirements.

© 2018 Rapiscan Systems | American Science and Engineering, Inc.

Rapiscan | AS&E — Part of the OSI Systems family of security companies. We deliver products and services that help our customers find threats and contraband with ease and confidence, while maximizing operational efficiency. Our global service network enables us to respond to customer needs quickly and provide exceptional support, because we know that every moment of uptime is critical. We understand the importance of our customers' missions—from uncovering trade fraud, to combating terrorism, to detecting drug and weapons smuggling, to exposing illegal immigration. That's why it's our mission to help them succeed.

**US Operations**  
829 Middlesex Turnpike  
Billerica, MA 01821

**UK Operations**  
Prospect Way  
Victoria Business Park  
Biddulph, Stoke-on-Trent ST8 7PL

**Contact**  
Tel: +1.978.262.8700  
Fax: +1.978.262.0533  
rapiscan-ase.com

### SYSTEM OPTIONS

- **Portal Mode:** Supports the drive-through scanning of traffic. Requires the purchase of traffic control and monitoring devices
- **CabScan Mode:** While in portal mode, safely scans the cab of the truck from front bumper to start of cargo
- **Driverless Mode:** System scans vehicles by autonomously moving between start and stop markers
- **Integrated Radiation Detection:** Gamma or gamma/neutron
- **Integrated Peripheral Devices:** License/number plate recognition system and container code recognition system
- **Extreme Cold Weather Package:** Extends the system operating temperature to -40° C
- **Extreme Hot Weather Package:** Extends the system operating temperature to +55° C
- **Car Scanning Ramp:** Stowed on board

**Rapiscan**  
systems

**AS&E**